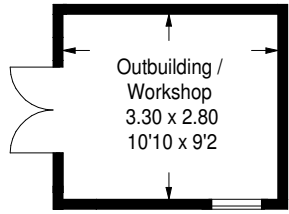
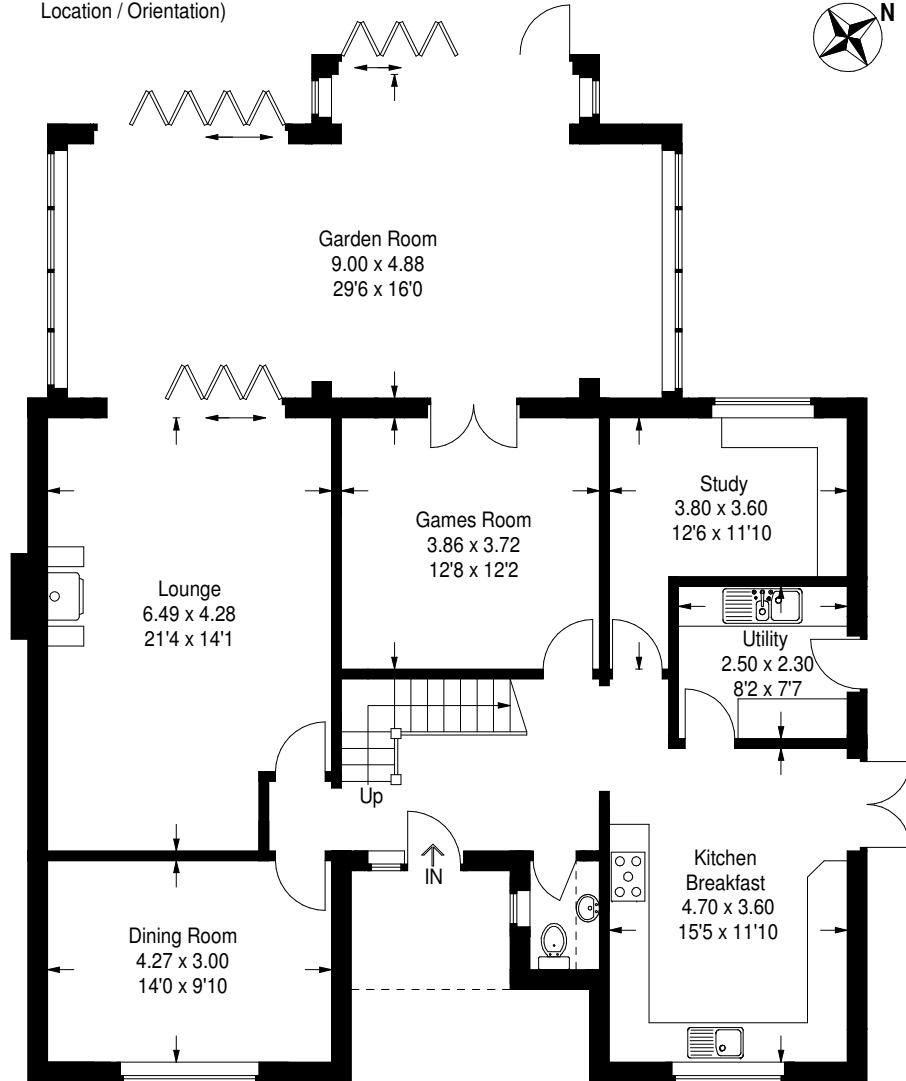


Church Street, Holme, PE7 3PB

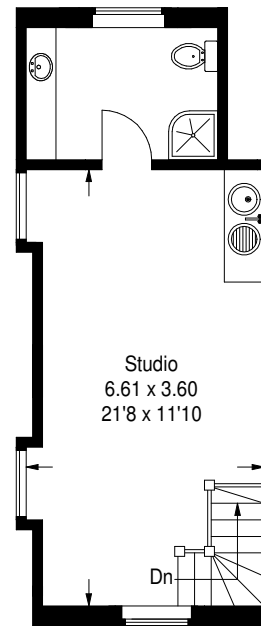
Approximate Gross Internal Area
 254.4 sq m / 2738 sq ft
 Tool Shed = 9.1 sq m / 98 sq ft
 Garage / Gym = 75 sq m / 807 sq ft
 Total = 338.5 sq m / 3643 sq ft



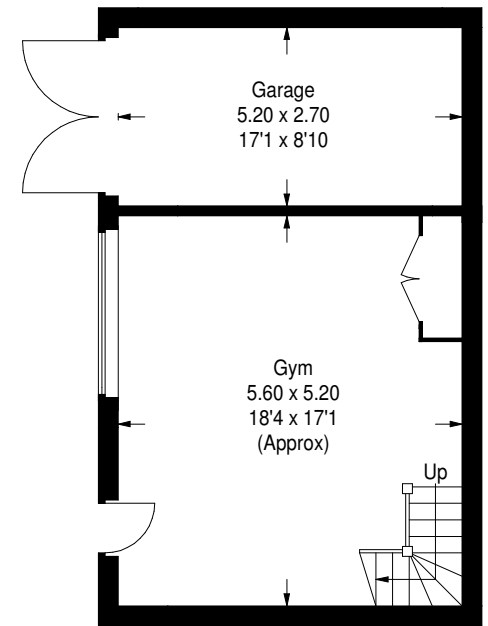
(Not Shown In Actual Location / Orientation)



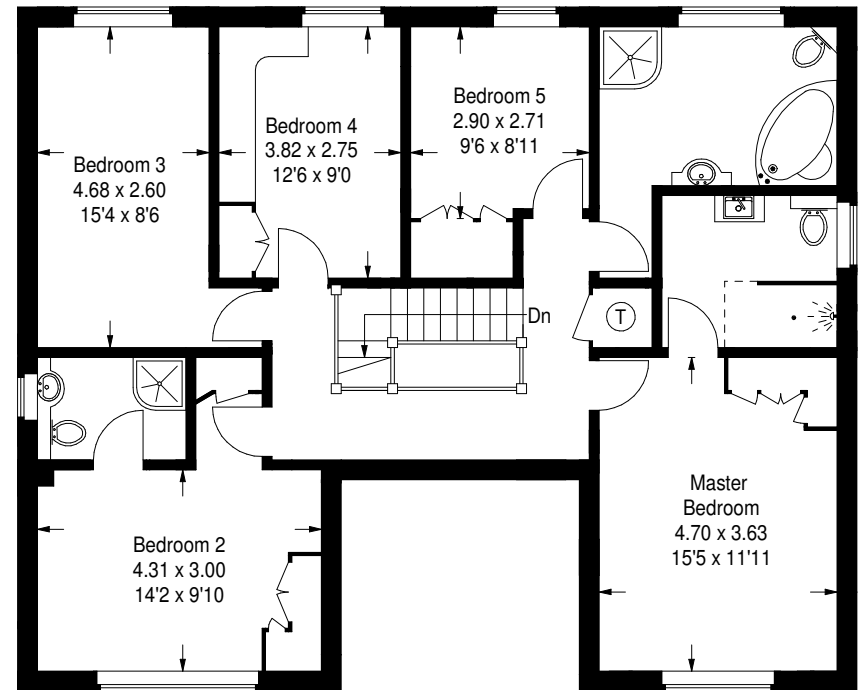
Ground Floor



**Garage / Gym
 First Floor**



**Garage / Gym
 Ground Floor**



First Floor